

RESPECT

everyone



RECURSESEP



Raise
YOUR HAND
to speak



RECURSESEP



TAKE CARE

of the materials



Don't use

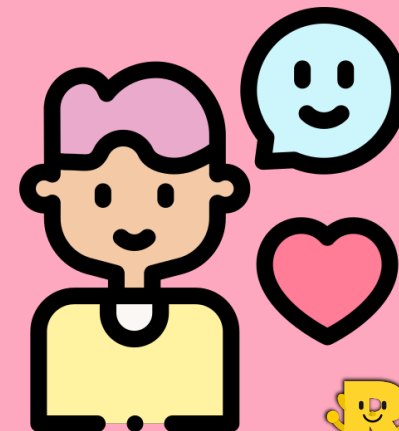
YOUR PHONE

without permission

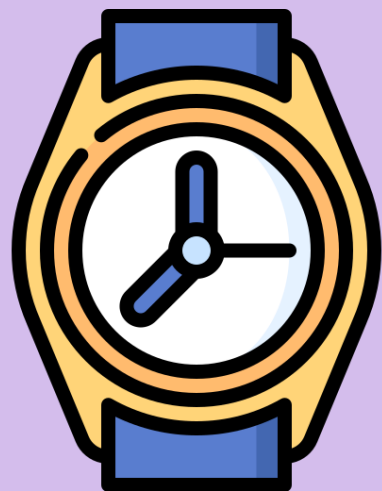


Be **KIND** and

EMPATHIC



RECURSOSEP



Be

PUNCTUAL



RECURSOSEP



THANK
YOU

PLEASE

Use

APPROPRIATE
LANGUAGE

WORK

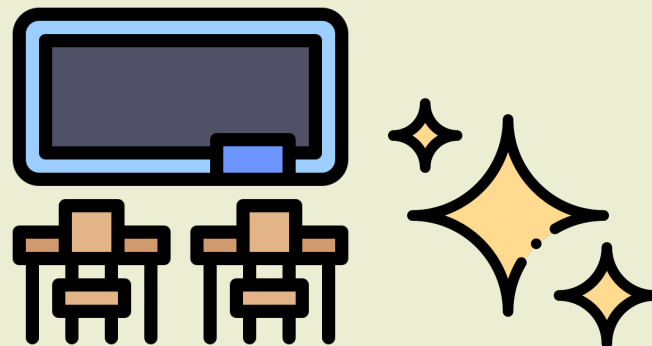
in class



Keep the classroom



CLEAN and
TIDY



Use an appropriate

tone
of voice

